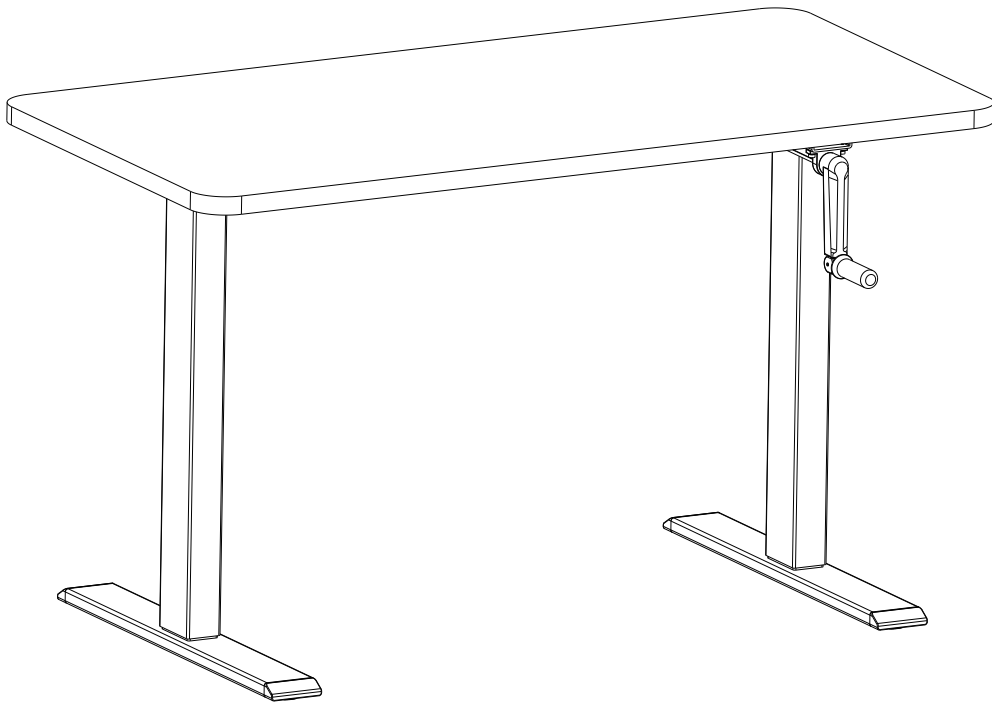


Crank Height Adjustable Desk



Please Read Instructions Before Use

ASSEMBLY & USE INSTRUCTIONS

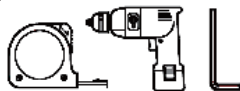
Package Contents

20 min

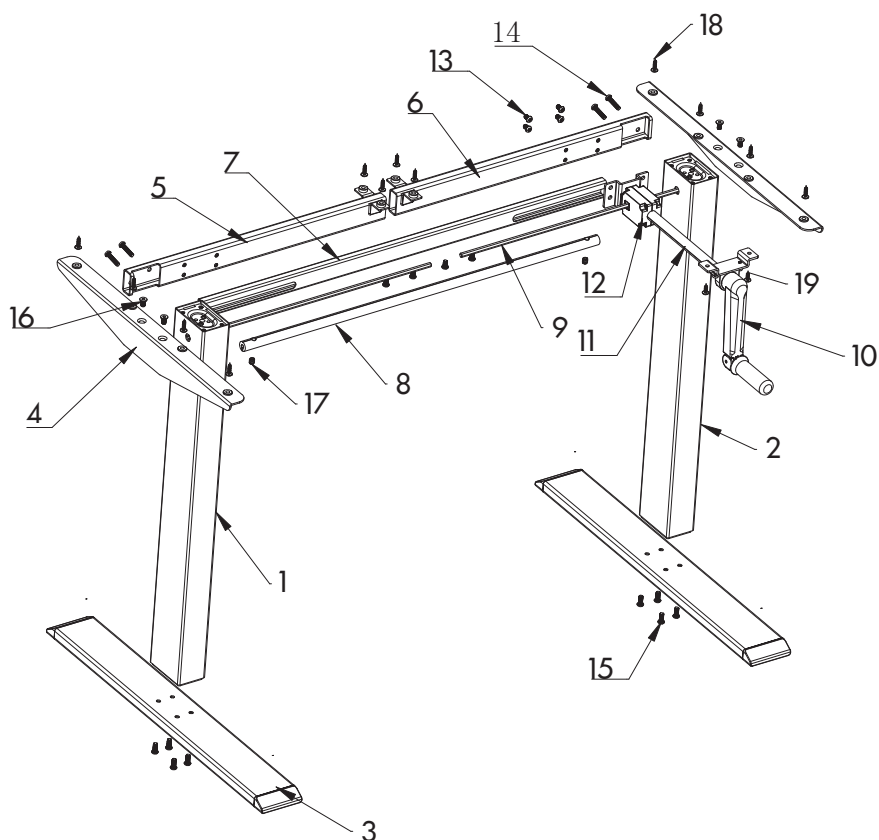
Installation time



Installation
personnel

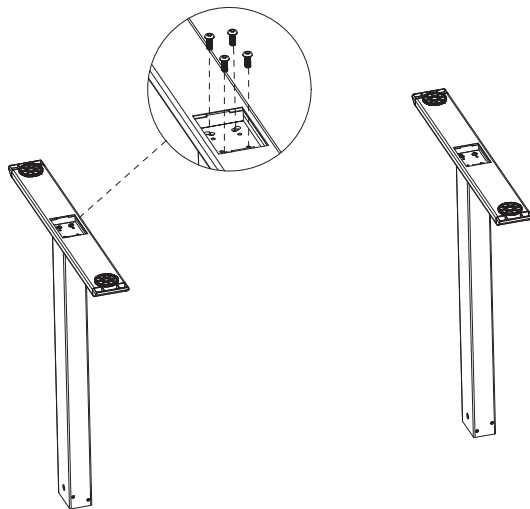


Installation tools
(self-provided)

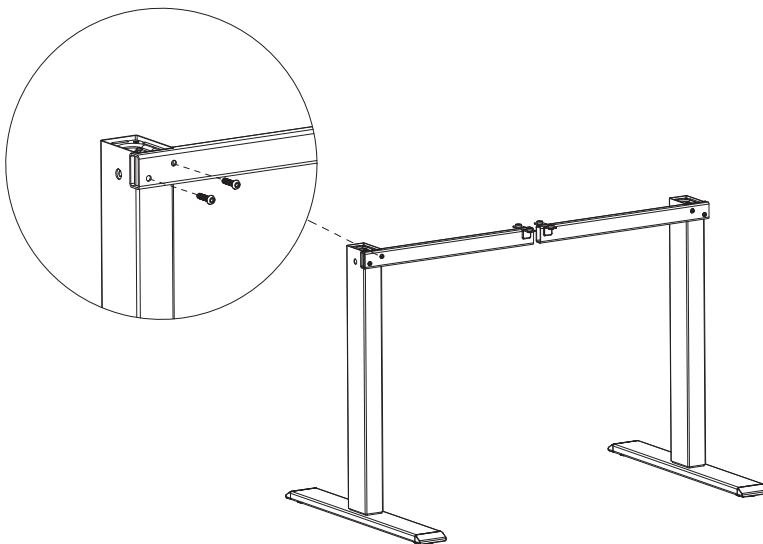


Part	Qty	Part	Qty	Part	Qty
1 Left Column	1	9 Hexagonal Rod	2	17 M8*8 Machine Screw	3
2 Right Column	1	10 Hand Crank	1	18 ST5*20 Tapping Screw	12
3 Foot	2	11 Hand Crank Aluminum Drive Rod	1	19 ST5*16 Tapping Screw	2
4 Side Bracket	2	12 Hand Crank Gearbox	1		
5 Left Frame	1	13 M6*10 Machine Screw	8		
6 Right Frame	1	14 M6*25 Machine Screw	4		
7 Center Rail	1	15 M6*14 Machine Screw	8		
8 Aluminum Drive Rod	1	16 M6*16 Countersunk Screw	4		

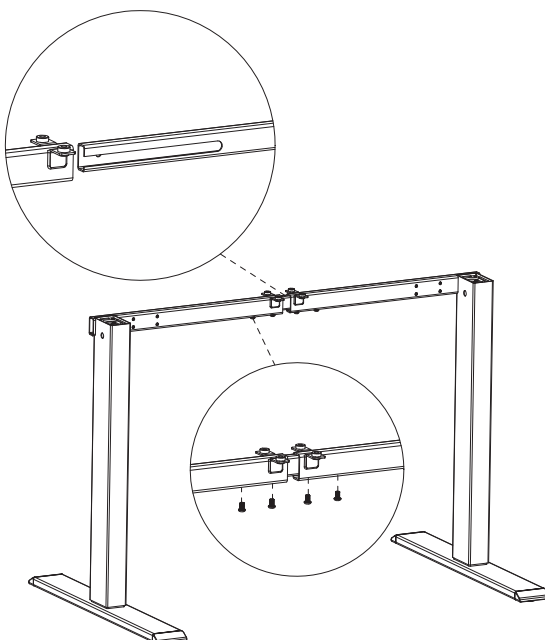
ASSEMBLY



STEP 1: Use eight M6*14 machine screws to fix the feet to the columns.

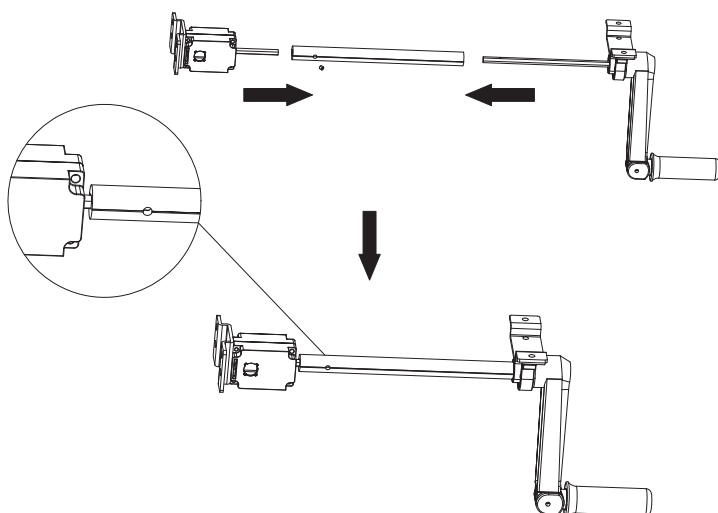


STEP 2: Snap the frames fastened into the columns and fix the frames to the columns with four M6*25 Machine Screw.



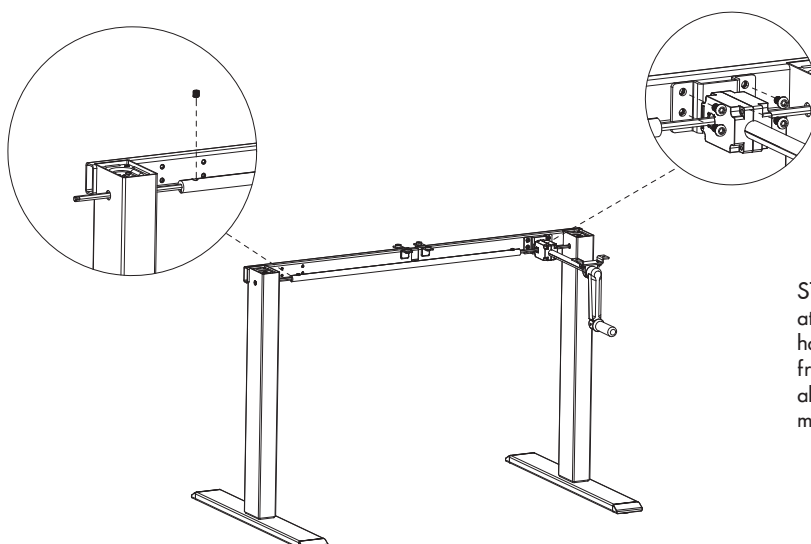
STEP 3: Insert the center rail into frames, using four M6*10 machine screws to fix, and pay attention to the open direction of the center rail slots.

ASSEMBLY

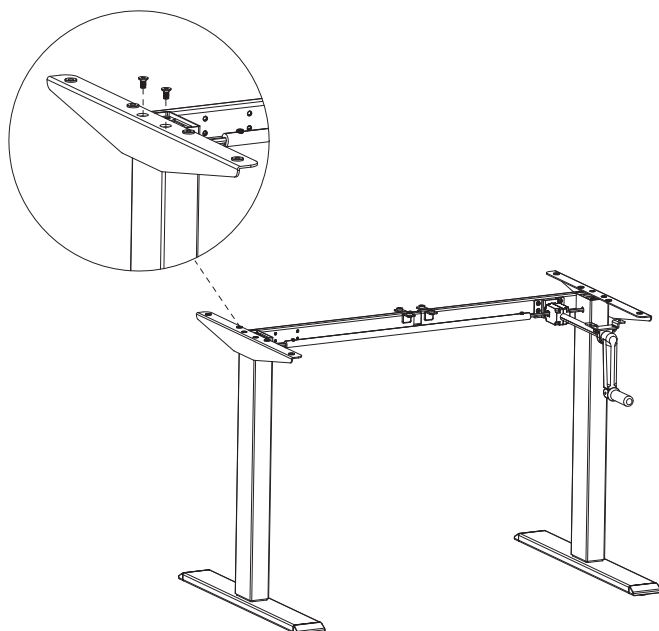


STEP 4:

1. Loosen the M8*8 machine screw which pre-installed on the aluminum drive rod of the hand crank.
2. Install the hand crank aluminum drive rod into the hand crank gearbox, pay attention to the direction of the drive rod screw.
3. Install the hand crank into the hand crank aluminum drive rod.
4. Tighten the M8*8 machine screw, the hand crank assembly installation is complete.

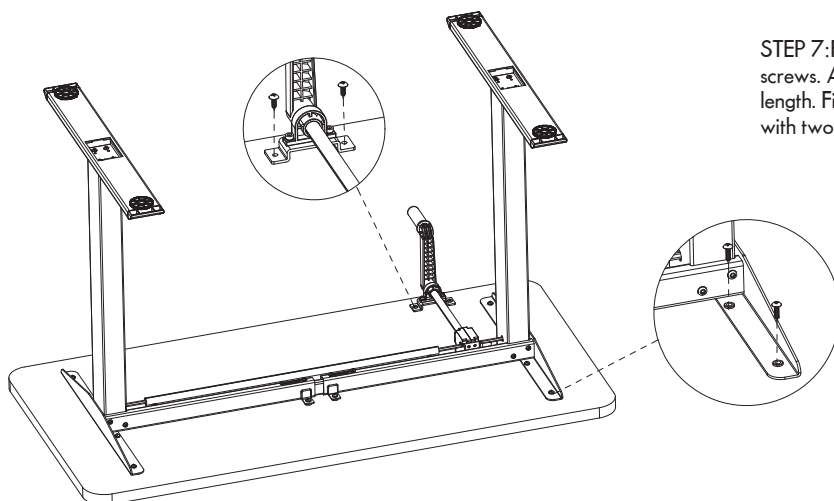


- STEP 5: Put two hexagonal rods into each column, pay attention to the direction of the metal driving rods. Put the hand crank assembly into the driving rods and fix it to the frames with four M6*10 machine screws. Finally, set the aluminum drive rods into it and fix it with two M8*8 machine screws.



- STEP 6: Fix the side brackets to the columns with four M6*16 Countersunk Screw.

ASSEMBLY



STEP 7: Fix the tabletop with twelve ST5*20 tapping screws. Adjust the hand crank assembly to the proper length. Fixing the hand crank assembly to the tabletop with two ST5*16 tapping screws.

STEP 8: Inverted installation completed.

